

**OTTAWA FASTENER SUPPLY LTD.  
THE TOOL & EQUIPMENT STORE**

2205 Robertson Rd., Nepean, ON K2H 5Z2  
700-3020 Hawthorne Rd. Ottawa, ON K1G 3J6

**Ph.: (613) 828-4117**

E-Mail: [sales@ottawafastenersupply.com](mailto:sales@ottawafastenersupply.com) • [www.ottawafastenersupply.com](http://www.ottawafastenersupply.com)



# Stay Safe & Warm this Winter!

## OSCILLATING CERAMIC HEATERS

- 120 V, 5200 BTU/h
- Built-in over heating protection, tip over switch and power indicator light
- Adjustable thermostat
- 2 heat settings (750 W and 1500 W) provide maximum comfort
- Includes fan only setting
- Power Source: Electric
- Power Cord Length: 6'



EB019



EB020

Model No.	MFG No.	Dimensions					PROMO PRICE
		W"	x	D"	x	H"	
EB019	FH128B	6.7	x	5	x	9.6	53.95
EB020*	FH126A	7.4	x	7.4	x	18.5	62.95

\* Tower

## PORTABLE FAN-FORCED CONVECTION HEATER

- 120 V, 6.25/12.5 A, 2560/5200 BTU/h
- Two heat settings (1500 W and 750 W) provide full comfort and efficient operation
- Adjustable thermostat
- Tip over safety switch and thermal limit control
- Wide-angle oscillation
- 8-1/2" W x 8" D x 12" H



Model No.  
EA597

PROMO PRICE

**31<sup>95</sup>**

## PORTABLE SALAMANDER HEATER

- 240 V, 34121 BTU/h, 10080 W
- Adjustable thermostat
- Adjustable tilt angle
- Mounted on 10" solid rubber wheels
- Power Source: Electric
- Fan Motor Type: Enclosed air over, ball bearing
- Over heat protection
- One heat setting, fan forced



Model No. EA786

PROMO PRICE  
**999<sup>00</sup>**

## HEAVY-DUTY TILTED HEATER

- 240 V, 23.3 A, 19107 BTU/h, 5600 W
- Industrial finger proof steel intake/discharge grills
- Durable metal construction with enclosed motor
  - One-speed fan only function
  - Adjustable thermostat
- Built-in over heating protection
  - Type: Ceramic
  - Power Source: Electric
  - Power Cord Length: 6'
  - Max. Temperature: 100°F



Model No. EB021

PROMO PRICE

**199<sup>00</sup>**

## PORTABLE CERAMIC HEATER



- 120 V, 2600/5200 BTU/h
- Two heat settings (1500 W and 750 W) provide full comfort and efficient operation
- Adjustable thermostat
- Convenient carry handle
- Stable metal base with tilt angle
- Tip-over and overheat protection
- Power Source: Electric
- Power Cord Length: 6'

PROMO PRICE

**58<sup>95</sup>**

Model No. EA785



## PORTABLE CERAMIC HEATER



- 120 V, 2560/5200 BTU/h
- Two heat settings (1500 W and 900 W) provide full comfort and efficient operation
- Adjustable thermostat
- Big carry handle

PROMO PRICE

**54<sup>95</sup>**

Model No. EA650



## PORTABLE FAN-FORCED UTILITY HEATER



- 120 V, 10.8/12.5 A, 4435/5120 BTU/h
- Two heat settings (1300 W and 1500 W)
- Adjustable thermostat
- Fan-only setting
- Tip over safety switch
- Built-in carrying handle with front safety guards
- 10" W x 6" D x 16" H

PROMO PRICE

**41<sup>95</sup>**

Model No. EA598



## PORTABLE CERAMIC HEATER



- 120 V, 6.25/12.5 A, 2560/5200 BTU/h
- Two heat settings (1500 W and 750 W) provide full comfort and efficient operation
- Adjustable thermostat
- PTC heating element
- Tip over safety switch and thermal safety fuse
- Power Source: Electric

PROMO PRICE

**44<sup>95</sup>**

Model No. EA599



## PORTABLE OPEN COIL HEATER



- 120 V, 8.3/12.5 A, 3410/5120 BTU/h
- Two heat settings (1500 W and 1000 W)
- Provides full comfort and efficient operation
- Fully adjustable automatic thermostat
- Safety overload switch
- Power signal light
- Grounded plug and controls
- 5" W x 7-1/4" D x 6-3/4" H

PROMO PRICE

**54<sup>95</sup>**

Model No. EA469



## PORTABLE FAN-FORCED/RADIANT UTILITY HEATER



- 120 V, 5/7.5/12.5 A, 2048/3072/5120 BTU/h
- 600-W radiant, 900-W fan-forced, 1500-W fan-forced and radiant
- Chrome-plated safety grill
- Automatic built-in thermostat
- Ceramic core element
- Safety tip-over switch and thermal limit control
- 9-1/2" W x 7-1/2" D x 14" H

PROMO PRICE

**94<sup>95</sup>**

Model No. EA466





## HEAVY-DUTY CEILING MOUNT HEATERS

- 240 V
- Built-in ceiling bracket for easy mounting
- Automatic fan delay
- Rugged heavy-duty industrial heater
- Ideal for use in storage rooms, workshops, garages, warehousing

EA532



Model No.	Motor	Rating (BTU/h)		PROMO PRICE
		Min.	Max.	
EA532	Open	8530	17 060	199.00
EA652	Enclosed	8530	25 600	299.00

## PORTABLE UNDER DESK RADIANT HEATER

- 120 V, 580 BTU/h
- Thin and lightweight
- Includes fold-out metal floor stand
- Power Source: Electric

PROMO PRICE

79<sup>95</sup>



Model No. EA651

## OIL-FILLED HEATER

- 120 V, 12.5 A, 1500 W, 5120 BTU/h
- 7-fin, oil-filled heater
- Three heat settings provide full comfort and efficient operation
  - Adjustable thermostat
- Built-in over heating protection

PROMO PRICE

66<sup>95</sup>



Model No. EA612

## CONTRACTOR HEATERS



EA477



EB100



- 240 V
- 6' heavy-duty cord
- Built-in handle/cord storage
- Built-in thermostat
- Permanently lubricated motor
- Safety high temperature limit
  - Steel spiral fin brazed to metal sheath elements for maximum heat transfer
- Plug Type: #6-30P

Model No.	Watts	BTU/h Rating	Amps	PROMO PRICE
EA477	5600	19 100	23.34	175.00
EB100*	4800	16 380	20	129.00

\* Enclosed motor

## ALL-WEATHER TPE-RUBBER EXTENSION CORDS

- 3-conductor SJEOW, 300 V grounding
- Jacket provides ultra flexibility and superior performance in extreme climate conditions at temperatures from -50°C to 105°C
- Water resistant and flame retardant
- Lighted connectors allow you to see when the power is in use

XC503



aurora tools® UL c UL

Model No.	Length'	AWG	Amps	Watts	PROMO PRICE
<b>HEAVY-DUTY, SINGLE TAP</b>					
XC500	25	14/3	15	1875	21.49
XC501	50	14/3	15	1875	39.71
XC502	100	14/3	15	1625	74.96
<b>HEAVY-DUTY, TRIPLE TAP</b>					
XH235	25	14	15	1875	25.65
XH236	50	14	15	1875	43.46
XH237	100	14	13	1625	74.96

Model No.	Length'	AWG	Amps	Watts	PROMO PRICE
<b>EXTRA HEAVY-DUTY, SINGLE TAP</b>					
XC503	25	12/3	15	1875	29.70
XC504	50	12/3	15	1875	56.59
XC505	100	12/3	15	1875	111.00
<b>EXTRA HEAVY-DUTY, TRIPLE TAP</b>					
XH238	25	12	15	1875	35.96
XH239	50	12	15	1875	62.21
XH240	100	12	15	1875	108.75



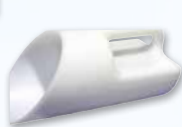
XH235

## HEAVY-DUTY OUTDOOR STORAGE CONTAINERS

ND337



- Thick-walled, durable polyethylene construction
- Double-walled reinforced lid
- Molded forklift channels and recessed hand holes



PE096



PE095

Model No.	Dimensions L" x W" x H"	Colour	PROMO PRICE
<b>5.5 CU.FT. CAPACITY</b>			
ND337	30 x 24 x 24	Yellow	159.00
ND202	30 x 24 x 24	Grey	159.00
<b>10 CU.FT. CAPACITY</b>			
NM947	48 x 24 x 24	Yellow	229.00
NM948	48 x 24 x 24	Grey	229.00
PE095	Yellow 1-Gallon Polyethylene Scoop		18.95
PE096	White 1-Gallon Polyethylene Scoop		18.95

## SALT & SAND SCOOP

- Polyethylene scoop ideal for salt and sand, compost and animal feed
- Capacity: 2 L
- Colour: Yellow



PROMO PRICE

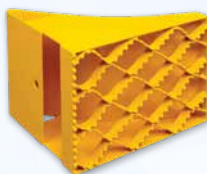
5<sup>99</sup>

Model No.  
JK232



## ICE CHOCK

- "Tooth" like bottom assures reliable grip
- Lightweight and dependable
- Maximum holding power for snow and ice
- Powder-coated safety yellow finish for high visibility
- Max. Tire Diameter: 20"
- 8" W x 10-1/2" D x 9-1/4" H
- Weight: 9 lbs.
- Formed steel



PROMO PRICE

39<sup>90</sup>

Model No. KH964



## BROADCAST SPREADER



Comes w/rain cover & screen

- Steel tube frame construction with chrome-plated hardware
- Heavy-duty nylon gear box increases product life span
- Setting control on handle for precise adjustments
- 12" x 4" pneumatic tires
- Coverage: 16000 sq.ft.
- Capacity: 100 lbs.

PROMO PRICE

159<sup>00</sup>

aurora tools™

Model No. NJ142

## NATURAL CHOICE™ ICE MELTER

- All-natural ice melter with an organic additive that improves its performance
- This additive also acts as a corrosion inhibitor to reduce metal fatigue
- Eco-friendly ice melter
- Container Size: 44 lbs. (20 kg)
- Melting Point: -24°C (-11°F)

PROMO PRICE

26<sup>95</sup>

Model No. NJ140  
MFG No. N0051B



## FIRESTORM™ INTENSE ICE MELTER

- Prevents refreezing even under the most challenging conditions
- Safe for children and pets, will not burn skin and gentle on vegetation
- Distinctive orange colour is easy to see, allowing you to use less while ensuring safety for pedestrians
- Container Size: 44 lbs. (20 kg)
- Melting Point: -32°C (-25°F)

PROMO PRICE

25<sup>95</sup>



Model No. JB597  
MFG No. F0042B



## RUNNER MATS

- Durable rubber mat resists harsh weather conditions
  - Easy to clean
- Adds traction to any entrance
  - Thickness: 1/8"
- Traffic: Light-Medium
  - Black

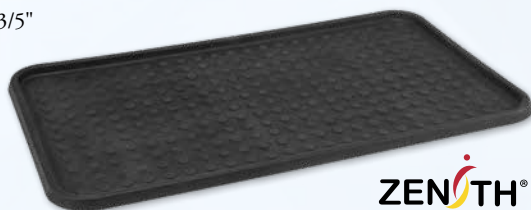


Model No.	Dimensions			PROMO PRICE
	W'	x	L'	
FINE RIBBED				
SDL875	2	x	75	191.00
SDL876	3	x	75	284.00
SDL877	4	x	75	439.00
SDL878	2	x	lin.ft.	3.49/lin.ft.
SDL879	3	x	lin.ft.	5.21/lin.ft.
SDL880	4	x	lin.ft.	6.98/lin.ft.
WIDE RIBBED				
SGG088	3	x	75	329.00
SGG089	3	x	lin.ft.	5.25/lin.ft.

## BOOT TRAY

- Keeps dirt and moisture off floors
- Durable plastic construction with a raised edge to corral melting snow, mud or salt
- Length: 25"
- Width: 14"
- Thickness: 3/5"
- Black

PROMO PRICE  
**4<sup>59</sup>**



Model No.  
SGH285



## BOOT & SHOE CLEANER

- Constructed of stiff polypropylene bristles
- Designed to effectively scrape off dirt & debris from footwear
- Option to anchor to the floor ensures a secure brush
- Ideal for high traffic areas such as schoolyards, construction sites and industrial areas
- Overall Length: 15"
- Yellow



PROMO PRICE  
**42<sup>00</sup>**



Model No.  
JK632

## SCRAPER MATS

- Scrape shoes and boots clean to avoid tracking dirt, slush, and snow
- Beveled edging to help prevent tripping
  - Thickness: 1/2"
- Surface Pattern: Textured
  - Traffic: Heavy
  - Black



Model No.	Dimensions W' x L'			PROMO PRICE
SFQ527	2	x	2-2/3	44.95
SFQ528	2-2/3	x	3-1/4	63.95
SFQ529	2-1/3	x	3-5/6	69.96
SFQ530	3	x	5	99.00
SFQ531	3	x	6	126.00

## SCRAPER MATS

- Scrape shoes and boots clean to avoid tracking dirt, slush, and snow
- Durable rubber mat resists harsh weather conditions
  - Low profile design
  - Easy to clean
  - Thickness: 5/16"
  - 3' W x 5' L
- Traffic: Medium-Heavy
  - Black

SDL872



SDL871



Model No.	Description	PROMO PRICE
SDL871	Solid	49.95
SDL872	Slotted	54.95

## BOOT SCRAPER

- Scrape shoes and boots clean to avoid tracking dirt, slush, and snow
- Rubber fingers brush the sides and bottom of boots
- Portable or can be made fixed (mounting hardware not included)
- Easy to clean
- Overall Length: 12"

PROMO PRICE

**29<sup>95</sup>**



Model No.  
SFQ526



NM810

## POLY SNOW SHOVELS

- Powder-coated steel handle
- Ergonomic poly D-grip handle



NM809



*aurora tools*

Model No.	Blade"	O.A. Length"	Steel Wear Strip	PROMO PRICE
NM810	19-3/4 x 13	51	No	17.50
NM809	19-3/4 x 13-1/8	51	Yes	17.90

## POLY SNOW PUSHERS W/STEEL WEAR STRIP

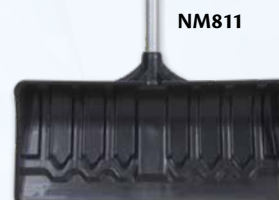
- Handle material: Steel
- D-Grip handle



*aurora tools*



NM812



NM811

Model No.	Blade"	Handle Length"	O.A. Length"	PROMO PRICE
NM812	21-1/4 x 9-1/4	42	50-1/4	17.50
NM811	24-1/2 x 10-3/4	42-1/8	51-3/8	22.90

## SCOOP SHOVEL

- Perfect for moving and scooping lightweight granulated materials
- Lightweight construction for comfort and productivity
- Hardwood handle with aluminum blade resistant to rust
- Blade Size: 14" x 18"
- Blade Material: Aluminum
- Handle Material: Wood
- Handle Type: D-Grip
- Handle Length: 24-1/2"

PROMO PRICE

**29<sup>90</sup>**



*aurora tools*

Model No. NM985

## SQUARE POINT SCOOP SHOVEL

- Blade Size: 14" x 18"
- Blade Material: Aluminum
- Handle Material: Wood
- Handle Type: Straight
- Handle Length: 45-3/4"
- Overall Length: 63-1/2"



PROMO PRICE

**29<sup>90</sup>**

Model No.  
TYX063

*aurora tools*



## SNOW ROOF RAKE

- Ideal for removing any kind of debris from roofs
- Prevents roof damage by removing ice dams & heavy snow
- Lightweight handle extends to 16'
- Blade Material: Polypropylene
- Blade Width: 24-3/4"
- Blade Height: 6"
- Handle Length: 61"
- Handle Material: Aluminum
- Handle Type: Straight

*aurora tools*



PROMO PRICE

**37<sup>50</sup>**

Model No. NN009



## HOTSPOTTER ALL-PURPOSE PROPANE TORCH KIT

- Works off the pressure of a propane tank, no regulator required
- Heavy-duty kit with durable cast iron and steel nozzle
  - 500000 BTU rating
- Ideal for a wide variety of all-season maintenance/repair applications
  - Includes: 10' neoprene hose, striker and on/off valve



PROMO PRICE

**110<sup>00</sup>**



WESTERN  
ENTERPRISES

Model No. 312-4904  
MFG No. WB-101

## EMERGENCY CAR SHOVEL



- Collapsible for easy storage
- Telescopic for extended reach 30" to 40"
- Durable 1-piece D-grip handle

PROMO PRICE

**15<sup>99</sup>**



Model No. NJ088  
MFG No. 6-222-E

## CAR SHOVEL W/TELESCOPIC HANDLE

- Emergency shovel designed and developed to help rescue you from any winter situation
- Equipped with an ultra-light, aluminum telescopic handle to make snow removal and storage in the trunk of your car easier
- Blade Material: Polypropylene
- Blade: 9" W x 5" H
- Handle Length: 24-3/4"
- Handle Type: D-Grip

Model No. NKA409  
MFG No. 99114

PROMO PRICE

**16<sup>99</sup>**



1 year  
warranty



## SLEIGH SNOW SHOVELS

- Top-of-the-line industrial grade tools designed for intense and continuous use
- Handle Type: Tubular



Model No.	MFG No.	Blade"	Wear Strip	PROMO PRICE
<b>42-1/2" STEEL HANDLE</b>				
NE299	EPSS24	23-1/2 x 30-1/2	Steel	59.99
<b>56" ALUMINUM HANDLE</b>				
NJ233	YEPG424	25-3/4 x 8	Polypropylene	42.99

## YUKON™ SNOW SHOVELS

- Top-of-the-line industrial grade tools designed for intense and continuous use
- Blade Material: Tempered steel
- Handle Material: Varnished ash wood
- Handle Type: D-Grip



NE312

ND296



Model No.	MFG No.	Blade"	Handle Length"	PROMO PRICE
NE312	YSP30D	30 x 12	42-3/4	36.99
ND296	YHS6D	11-1/2 x 14-1/2	34-3/4	39.99

## ALPINE® SNOW PUSHERS

- Yellow poly blade with steel wear strip
- Stained 46-1/4" long ash handle with poly ribbed D-grip



ND303

ND707



Model No.	MFG No.	Blade"	PROMO PRICE
ND303	APP21KDR	11 x 20-3/4	22.50
ND707	APP26KDR	11 x 26	33.50

## SCRAPERS

- Top-of-the-line industrial grade tools designed for intense and continuous use
- Handle Material: Ashwood
- Handle Type: Straight
- Handle Length: 48"
- Blade Material: Tempered steel



ND115

Model No.	MFG No.	Series	Blade"	PROMO PRICE
ND067	NHSW7	Nordic™	7 x 5-1/2	19.99
ND040	AFSW7	Alpine™	7 x 6	38.99
ND115	YFSW9	Yukon™	8-1/2 x 6-1/4	47.99



## TELESCOPIC SNOW BRUSH

- Aluminum handle with comfortable EVA foam grip
- Overall Length: 36"
- Telescopic or Non Telescopic: Telescopic
- Colour: Blue
- Blade Type: Polypropylene
- Head Width: 9-3/4"
- Scraper Width: 5"

**aurora tools®**

Model No. NM980



PROMO PRICE

**6<sup>99</sup>**

## LONG REACH SNOW BRUSH

- Aluminum handle with comfortable EVA foam grip
- Overall Length: 34"
- Telescopic or Non Telescopic: Non Telescopic
- Colour: Blue
- Blade Type: Polypropylene
- Head Width: 8-3/4"
- Scraper Width: 5"

**aurora tools®**

Model No. NM979



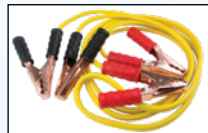
PROMO PRICE

**5<sup>49</sup>**

## BOOSTER CABLES

- Cable remains flexible in temperatures as low as -40°C
- Clamp design fits on both top-post and side-post batteries
- Surge suppressor on 2, 4, and 6 gauge cables protect a vehicles computer system from power surges during boosting
- Tangle-free

XE494



XE495



**aurora tools®**

Model No.	Wire Gauge	Wire Length'	Amperage	Colour	PROMO PRICE
XE494	8	10	150	Yellow	14.95
XE495	6	16	400	Red/Black	31.50
XE496	4	20	400	Red/Black	35.75
XE497	2	20	400	Red/Black	71.25

## SCRATCH-FREE SNOW BRUSHES

- Lightweight aluminum handle for a more durable and comfortable grip
- Sturdy scraper made of polycarbonate is perfect for getting through thick ice
- Innovative blade design makes cleaning side mirrors and wiper wells easier
- Colour: Red
- Blade Type: EVA Foam



NJ399

Model No.	Description	Head Width"	O.A. Length"	PROMO PRICE
NJ399	Non Telescopic	4-3/4	36	25.99
NM807	Telescopic	13-3/4	52	27.99

## TRIANGULAR REFLECTOR KIT

- Ideal for increasing visibility around disabled vehicles
- Fast and easy to set up and stow away
- Weighted base provides additional stability
- Instructions for proper use are printed on the case and on each triangle
- Kit includes 3 triangles and a red carry case
- Meets DOT FMVSS 125 standards

**ZENITH®**  
Safety Products

PROMO PRICE

**24<sup>75</sup>**



Model No. SGD773

## TRAFFIC VESTS

- High-visibility lightweight polyester mesh provides daytime visibility
- 2" yellow reflective stripes
- Bright reflective stripes provide 360° nighttime visibility
- 5-point tear-away feature on shoulders, sides and front for easy quick release
- Colour: High Visibility Orange

**ZENITH®**  
Safety Products

SEF093



Model No.	Size
SEF093	Medium
SEF094	Large
SEF095	X-Large
SEF096	2X-Large

PROMO PRICE

**7<sup>49</sup>**

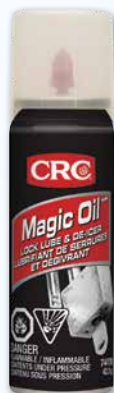


## MAGIC OIL™ LOCK LUBE & DE-ICER

- Graphite formula lubricates seized and frozen locks for long-lasting, smooth operation
- Nozzle allows for easy application directly in keyhole
- Format: 42.5 g
- Container Type: Aerosol Can

PROMO PRICE

**7<sup>49</sup>**



Model No. AF440  
MFG No. 74119

## JUMP START® STARTING FLUID

- Assures fast and economical starts in cold or humid conditions
- For use in both gasoline and diesel engines
- Format: 312 g
- Container Type: Aerosol Can

PROMO PRICE

**6<sup>30</sup>**



Model No. AF260  
MFG No. 75671

## ICE-OFF™ WINDSHIELD SPRAY DE-ICER

- Ideal for melting ice, snow and frost on contact
- Does not harm car finish
- Thaws frozen locks
- Container size: 16 oz.
- Net container size: 340 g
- Container type: Aerosol Can

PROMO PRICE

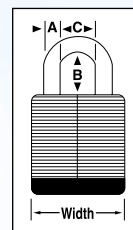
**6<sup>15</sup>**



Model No. AF119  
MFG No. 75346

## PRO SERIES® WEATHER TOUGH® PADLOCKS

- Laminated steel body with hardened boron alloy shackle for superior protection
- 5-pin cylinder with spool pins for added pick resistance
- Body and cylinder covers protect lock from water, dirt and grime
- Keyed different



SAL433

**Master Lock**

Model No.	MFG No.	Body W" x T"	Shackle Clearance A" B" C"	PROMO PRICE
SAL433	6121	2-1/8 x 1	5/16 1-1/8 7/8	28.80
SAL434	6121LJ	2-1/8 x 1	5/16 2-1/2 7/8	31.20
SA902	6125	2-3/8 x 1-3/16	3/8 1-3/8 7/8	33.10

## WEATHER TOUGH® PADLOCKS

- 5-spool pin tumbler cylinder for added pick resistance
- Body and cylinder covers on Weather Tough® padlocks protect locks from water, dirt and grime
  - Security Level: High
  - Shackle Clearance Height: 3/4"
  - Shackle Clearance Width: 7/8"
- Body Material: Laminated Steel
  - Key Type: Keyed Different
  - Colour: Black



SA904

**Master Lock**

Model No.	MFG No.	Shackle Dia."	Body Width	PROMO PRICE
SA904	6325	3/8	2-3/8	49.50
SEJ517	6321	5/16	2-1/8	39.90

## OUTDOOR PROTECTION PADLOCKS

- 1-9/16" laminated steel body construction for superior strength
- High-tech thermoplastic shell designed to protect and withstand the elements
- Hardened steel shackle
- Locks come with two keys
- Key type: different
- Colour: Blue



SN706

**Master Lock**

Model No.	MFG No.	Shackle Diameter"	Shackle Clearance Height" Width"	PROMO PRICE
SN706	312	3/8	1 1/2	14.50
SEJ518	312D	9/32	1-1/16 5/8	14.50

## INSULATED TARPAULIN

- Lightweight and flexible, moisture resistant insulated tarpaulin
- Manufactured with 3/16" closed cell polyethylene foam insulation
- R-value is maintained in damp cold conditions
- Durable, water resistant polyethylene shell
- Heavy-duty rust resistant grommets every 2'
- Length: 20'
- Width: 12'
- Thickness: 8 mils
- Colour: Orange

**Model No.**  
**JD420**

**PROMO PRICE**  
**126<sup>00</sup>**

**KLETON**



## POLYETHYLENE TARPAULINS

- 14 x 14 weave density
- 200 micrometers (8 mil) thick
- Colour: Black
- Light Industrial Duty

**KLETON**



Model No.	Dimensions* L' x W'	PROMO PRICE
J1327	8 x 6	6.10
J1328	10 x 8	10.15
J1329	20 x 10	25.35
J1330	16 x 12	24.30
J1331	20 x 16	40.55
J1332	24 x 18	54.75
J1333	30 x 20	76.00
J1334	30 x 24	91.25
J1335	40 x 30	152.00
J1336	50 x 30	190.00
J1337	50 x 40	255.00
J1338	60 x 40	305.00

\* Finished sizes may vary due to hem allowance

## POLYETHYLENE TARPAULINS

- 10 x 10 weave density
- 150 micrometers (6 mil) thick
- Colour: Camouflage
- Heavy Duty

**KLETON**



Model No.	Dimensions* L' x W'	PROMO PRICE
J1319	8 x 6	6.29
J1320	10 x 8	10.50
J1321	20 x 10	26.15
J1322	16 x 12	25.25
J1323	20 x 16	41.95
J1324	24 x 18	52.35
J1325	30 x 20	75.95
J1326	40 x 30	156.00

\* Finished sizes may vary due to hem allowance

## POLYETHYLENE TARPAULINS

- 8 x 8 weave density
- Thickness: 100 micrometers (4 mil)
- Colour: Blue
- Standard Duty

**KLETON**



Model No.	Dimensions* L' x W'	PROMO PRICE
NI771	12 x 10	8.66
NI772	20 x 10	14.30
NI773	16 x 12	13.80
NI774	20 x 16	22.90
NI775	24 x 18	33.50
NI776	30 x 20	46.30
NI777	30 x 24	51.70
NI778	40 x 30	87.00

\* Finished sizes may vary due to hem allowance

## ADVANCED HAND SANITIZER

- Purell® in a 70% ethyl alcohol, fragrance & dye free formulation
- Effective in destroying certain bacteria
- Contains vitamin E and glycerine
- Unscented

**Purell**

Model No.	Description	Dispenser	PROMO PRICE
JA912	59 ml Squeeze Bottle	-	2.52
JA722	118 ml Bottle	-	2.95
JA358	237 ml Pump Bottle	-	5.75
SAR856	354 ml Pump Bottle	-	7.95
SAR854	1000 ml Refill	JA355	14.60
SAR855	1200 ml Refill	SAQ139	25.95

**SAR855**

**JA358**



**SAR854**



**JA912**

**JA722**